

F119 Design

HD heating panel with high-precision electronic thermostat

ErP Ready**



COMFORT

- Fast heating thanks to an efficient and homogeneous heat distribution on the appliance surface
- Sheathed heating element with an aluminium diffuser (safe, silent and long-lasting)
- Ultimate safety due to Class II, IP 24 protection and dual electric insulation
- Anti-tilt system and automatic over-heating safety system

SAVINGS

- High-precision electronic thermostat
- Up to 15% energy savings*
- ErP-ready**: more energy savings

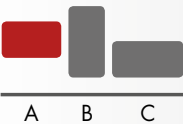

USER-FRIENDLINESS

- 5-mode switch: Comfort, Eco, Frost-free, Off, Programme
- Mode setting cursor and control knob
- Easy to install: H-shaped vertical support
- Models with plug and standing kit (optional)

DESIGN

- HD heating panel with high-end design
- Stamped front air outlet
- Colour: white (RAL 9016)

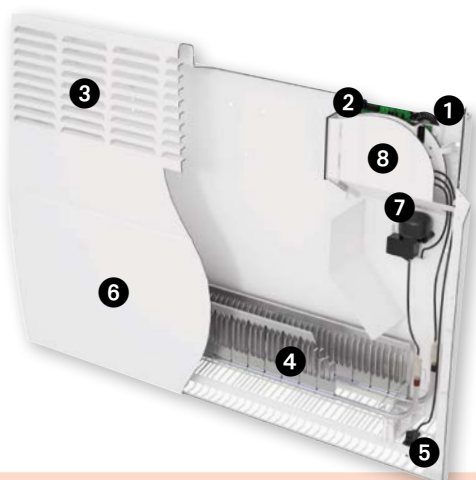


 <p>Model available***</p>	<p>ACTIVE HEAT CONVECTOR 500 TO 2500 W</p> <p>Output</p>	<p>UP TO +15% ENERGY SAVINGS*</p> <p>Energy savings</p>
 <p>Control knob + slider</p>	<p>HD Technology 2 in 1</p> <p>Technology</p>	<p>SHEATHED ELEMENT + ALUMINIUM DIFFUSER</p> <p>Heating element type</p>

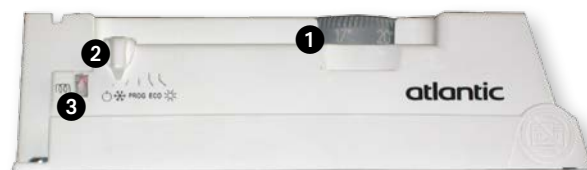
* Compared with a mechanical convector

** Depending on models

*** Model types: A: Horizontal / B: Vertical / C: Plinth



- 1 Control knob
- 2 Mode setting cursor
- 3 Air outlet
- 4 Sheathed heating element with aluminium diffuser
- 5 Room temperature sensor
- 6 HD front panel
- 7 Anti-tilt system
- 8 Over-heating safety device

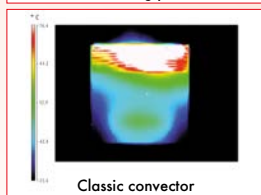
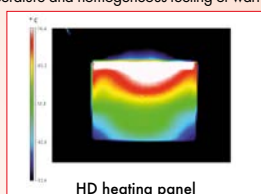


- 1 Temperature setting knob
- 2 Mode setting slider switch (Shutdown, Anti-frost, Programming, Comfort, Eco)
- 3 Heating light indicator

HD
Technology
2 in 1

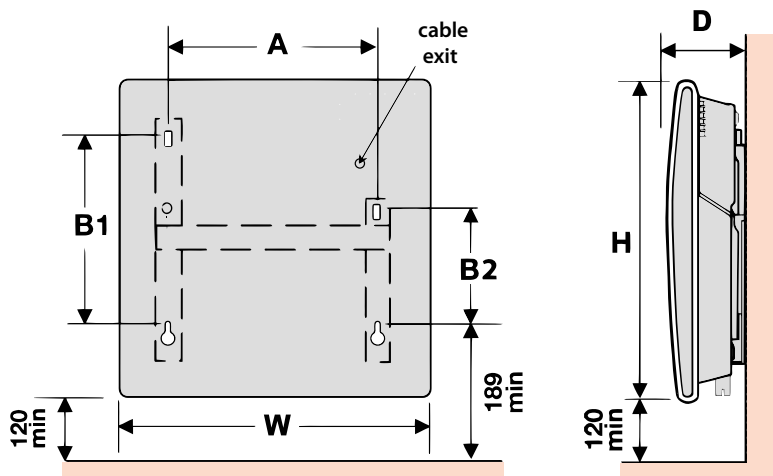
HD TECHNOLOGY

HD panel's surface heat combined with convection heat for a quick rise in temperature and homogeneous feeling of warmth:



HD heating panel heat diffusion compared with a classic convector

INSTALLATION DIMENSIONS (in mm)



F119 DESIGN

TECHNICAL DATA

OUTPUT (W)	DIMENSIONS (mm)						NET WEIGHT (kg)
	Width (W)	Height (H)	Depth (D)	A	B1	B2	
500	391	461	114	122	256	158	3.1
1000	465	461	114	196	256	158	3.5
1500	613	461	114	344	256	158	4.4
2000	761	461	114	492	256	158	5.3
2500	909	461	114	640	256	158	6.2

* Depending on models

CE - Classe II - IP 24

www.atlantic-comfort.com